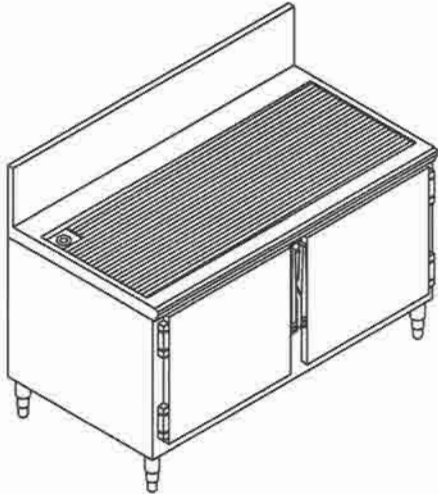




UR MODELS

Underbar Refrigerators

20" high body x 22" depth



PROJECT _____
 ITEM NO. _____
 QTY. _____

DOORS	REMOTE		SELF-CONTAINED	
	MODEL	LENGTH	MODEL	LENGTH
<input type="checkbox"/> 1	UR-1	25-1/2"	US-1	37-1/2"
<input type="checkbox"/> 2	UR-2	48"	US-2	60"
<input type="checkbox"/> 3	UR-3	72"	US-3	84"
<input type="checkbox"/> 4	UR-4	96"	US-4	108"

STANDARD FEATURES

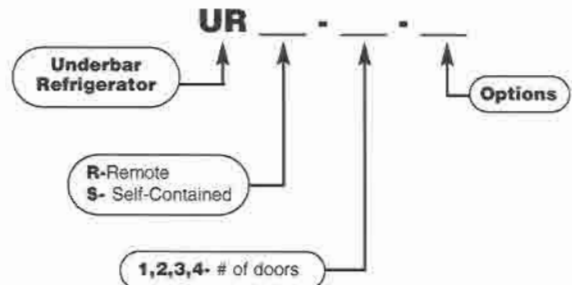
- **ALL WELDED CONSTRUCTION**
- **TOP** - 18 gauge galvanized sub-top.
- **EXTERIOR FRONT & SIDES & INTERIOR** - 20 gauge #304 s/s stainless steel. Back and bottom are 18 gauge galvanized.
- **DOORS** - 18 gauge front and 20 gauge back #304 18-8 stainless steel with polyurethane shot-in-place foam insulation. Non-magnetic, high compression, long life vinyl gasket. Kason edge mount self-closing hinges and locking door latch.
- **DOOR PAN** - 20 gauge #304 18-8 stainless steel.
- **INSULATION** - 2" thick polyurethane shot-in-place foam (NO CFC's)
- **BREAKER STRIP** - Exclusive Foam-Locked breaker strip permanently installed without mechanical fasteners.
- **SHELVING** - Two adjustable, vinyl coated wire racks per door section.
- **SELF-CONTAINED REFRIGERATION** - fully balanced hermetic condensing unit is provided with evaporator coil, TX valve, thermostat, gravity defrost system and condensate evaporator.
- **REMOTE MODELS** - include all of the above with the exception of condensing unit and condensate evaporator pan. Expansion valve shipped loose. No pre-wiring.
- **LEGS** - 6" x 1-5/8" stainless steel legs with adjustable bullet feet.
- **INTERIOR LIGHTS**- Bulb type option L.

OPTIONS

- TFS** -----flat s/s top with backsplash
- TCS** -----corrugated s/s top with backsplash
- TK** -----stainless steel toe kick plate
- SBK** -----stainless steel back
- SBT** -----stainless steel bottom
- SSS** -----stainless steel wire shelves
- F** -----freezer
- RCND**-----remote condensing unit
- EVP** -----condensate evaporator (remote only)
- DT** -----dual temp
- M** -----customized
- PP** -----Pre-piped & pre-wired. Refrigeration, plumbing and electrical will be stubbed out at required location by specifying one of the following: LE-left end, RE-right end, BL-back left, BR-back right.
- L** -----lights pre-wired

Model Number Guide

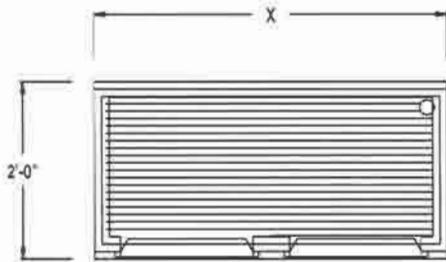
Use this guide to create the model specific to your needs.



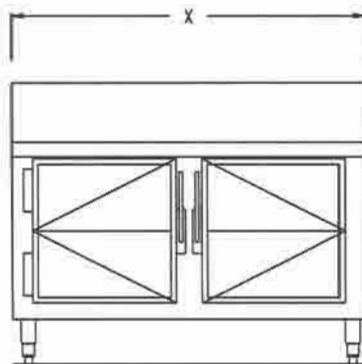


UR MODELS

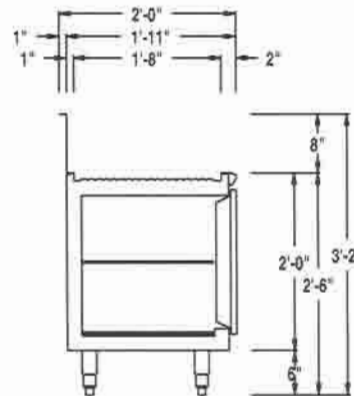
Underbar Refrigerators



PLAN



ELEVATION



SECTION

MODEL	DOORS	O.A. CABINET DIMENSIONS			COMPRS.	ELECTRICAL			SHIP		
		LENGTH	DEPTH	HEIGHT	HP.	AMPS	VOLTAGE	PHASE	BTUs	WEIGHT	CUBE
URR-1	1	25-1/2"	22"	20"	—	1.3	115v	SINGLE	1000	155	24
URR-2	2	48"	22"	20"	—	1.7	115v	SINGLE	1200	235	38
URR-3	3	72"	22"	20"	—	1.9	115v	SINGLE	1300	355	51
URR-4	4	96"	22"	20"	—	2.5	115v	SINGLE	2000	460	65
URS-1	1	37-1/2"	22"	20"	1/4	8.9	115v	SINGLE	—	245	24
URS-2	2	60"	22"	20"	1/4	9.3	115v	SINGLE	—	325	38
URS-3	3	84"	22"	20"	1/3	10	115v	SINGLE	—	445	51
URS-4	4	108"	22"	20"	1/2	11	115v	SINGLE	—	550	65

SELF CONT. REMOTE