

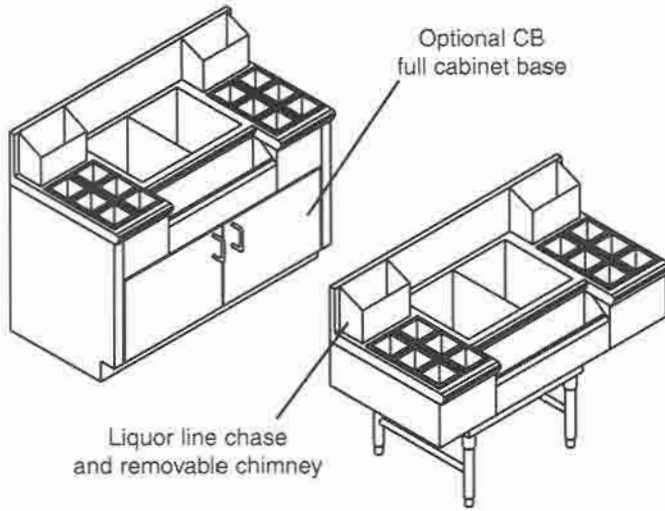


CJ MODELS

Casino Jockey Stations

with 8 circuit cold plate

PROJECT _____
 ITEM NO. _____
 QTY. _____



"S" SERIES (24" DEEP)	STORAGE CAPACITIES			LIQUOR CHASES	
	MODEL	LENGTH	ICE	BOTTLES	LEFT
<input type="checkbox"/> SCJ-42P8	42"	64	16	6" x 6"	12" x 12"
<input type="checkbox"/> SCJ-48P8	48"	81	19	12" x 12"	12" x 12"
<input type="checkbox"/> SCJ-54P8	54"	101	21	12" x 12"	12" x 12"
<input type="checkbox"/> SCJ-60P8	60"	122	23	12" x 12"	12" x 12"

For model less Cold Plate, drop P8 from end of model number, ex: SCJ-48

"D" SERIES (28 1/2" DEEP)	STORAGE CAPACITIES			LIQUOR CHASES	
	MODEL	LENGTH	ICE	BOTTLES	LEFT
<input type="checkbox"/> DCJ-42P8	42"	64	16	6" x 6"	12" x 12"
<input type="checkbox"/> DCJ-48P8	48"	81	19	12" x 12"	12" x 12"
<input type="checkbox"/> DCJ-54P8	54"	101	21	12" x 12"	12" x 12"
<input type="checkbox"/> DCJ-60P8	60"	122	23	12" x 12"	12" x 12"

For model less Cold Plate, drop P8 from end of model number, ex: SCJ-48

ALL INCLUSIVE FEATURES:

- Two bottle well boxes each with liquor line chase and removable chimney at rear for easy liquor system installation
- Jockey station ice chest with 8 circuit cold plate
- Built-in speed rail

STANDARD FEATURES

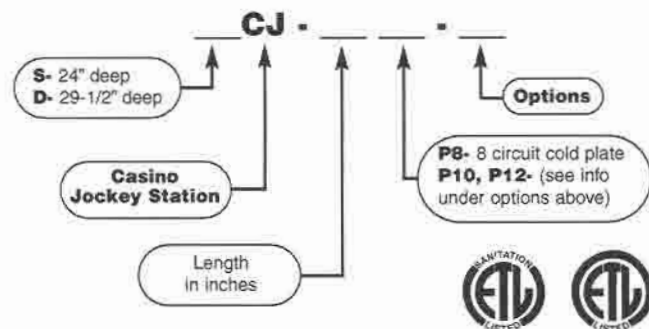
- **ALL WELDED CONSTRUCTION** - fully welded, ground and polished to form one integral unit; no screws, pop-rivets or solder.
- **TOP** - 18 gauge #304 series 18-8 stainless steel.
- **FRONT APRON** - 18 gauge #304 series 18-8 stainless steel.
- **BACK** - 18 gauge #304 series 18-8 stainless steel.
- **BOTTOM** - 18 gauge #304 series 18-8 stainless steel.
- **ENDS** - 18 gauge #304 series 18-8 stainless steel.
- **BACKSPLASH** - 18 gauge #304 series 18-8 stainless steel.
- **ICE CHEST LINER** - 12-1/2" net deep, 18 gauge #304 series 18-8 stainless steel all welded with 3/8" radius corners.
- **8 CIRCUIT FAST-FLO SEALED-IN COLD PLATE**
- **INSULATION** - polyurethane shot-in-place foam (NO CFC's).
- **DECORATIVE POLISHED BULLNOSE**
- **BOTTLE WELL ASSEMBLIES** - independent stainless steel housing with individual polypropylene bottle wells.

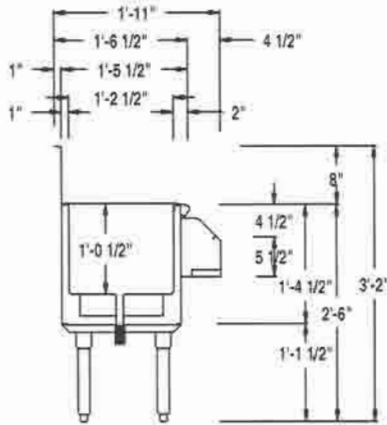
OPTIONS

- CB** -----full cabinet base with removable hinged doors
- 18X** -----18" deep ice chest
- CR-#**-----condiment rail (specify # of pans)
- IP**-----ice partition
- PTI**-----pass-thru ice chest
- PRF** -----perforated bottom plate (only in non-cold plate units)
- M**-----customized

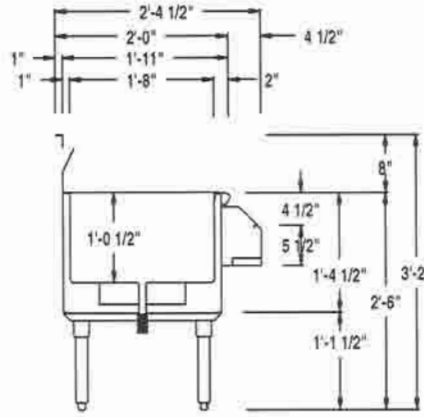
Model Number Guide

Use this guide to create the model specific to your needs.

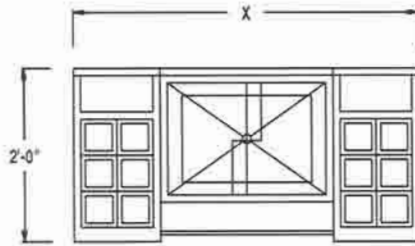




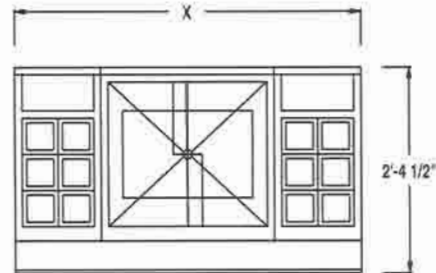
"S" SECTION



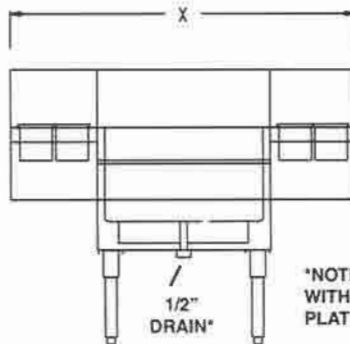
"D" SECTION



"S" PLAN

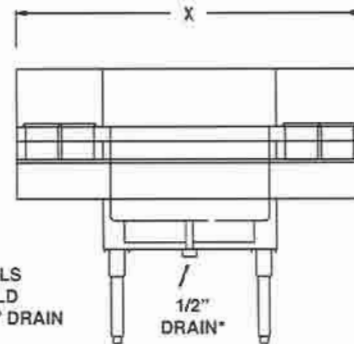


"D" PLAN



"S" ELEVATION

*NOTE: MODELS WITHOUT COLD PLATE USE 1" DRAIN



"D" ELEVATION

"S" SERIES (24" DEEP)

MODEL NUMBER	O.A. LENGTH	O.A. DEPTH	ICE CAP.	BOTTLE CAP.	LIQUOR CHASE L	LIQUOR CHASE R	SHIP WEIGHT	CUBE
SCJ-42P8	42"	24"	81	16	12"x6"	12"x12"	180	18
SCJ-48P8	48"	24"	81	19	12"x12"	12"x12"	220	18
SCJ-54P8	54"	24"	101	21	12"x12"	12"x12"	260	21
SCJ-60P8	60"	24"	122	23	12"x12"	12"x12"	295	24

"D" SERIES (28 1/2" DEEP)

MODEL NUMBER	O.A. LENGTH	O.A. DEPTH	ICE CAP.	BOTTLE CAP.	LIQUOR CHASE L	LIQUOR CHASE R	SHIP WEIGHT	CUBE
DCJ-42P8	42"	28-1/2"	102	19	12"x6"	12"x12"	180	18
DCJ-48P8	48"	28-1/2"	102	23	12"x12"	12"x12"	220	18
DCJ-54P8	54"	28-1/2"	126	25	12"x12"	12"x12"	260	21
DCJ-60P8	60"	28-1/2"	153	27	12"x12"	12"x12"	295	24