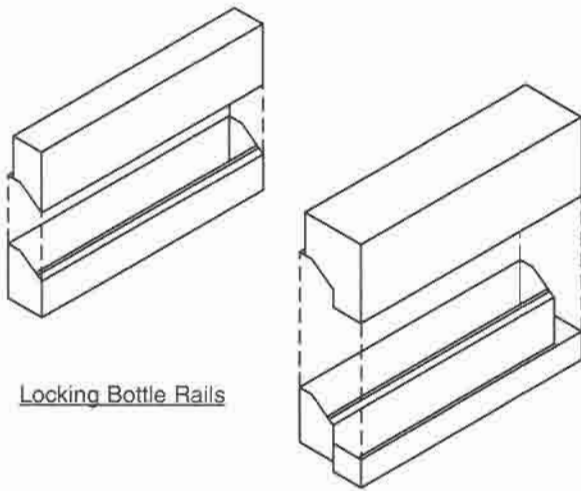
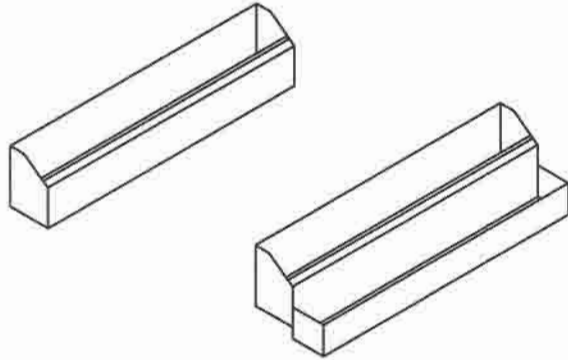




BR MODELS

Bottle Rails

PROJECT _____
 ITEM NO. _____
 QTY. _____



Locking Bottle Rails

	MODEL	LENGTH	DESCRIPTION
<input type="checkbox"/>	BRS-	(xx)"	SINGLE BOTTLE RAIL
<input type="checkbox"/>	BRSL-	(xx)"	SINGLE LOCKING BOTTLE RAIL
<input type="checkbox"/>	BRD-	(xx)"	DOUBLE BOTTLE RAIL
<input type="checkbox"/>	BRDL-	(xx)"	DOUBLE LOCKING BOTTLE RAIL

Specify desired length for any model above

OPTIONS

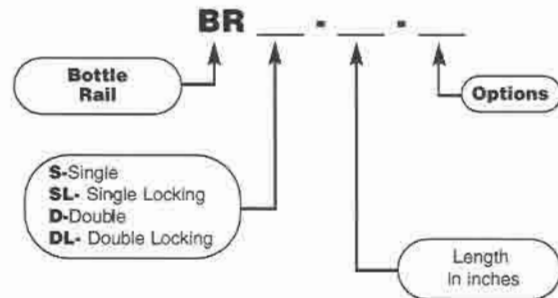
- FW** -----factory welded to front apron
(recommended for locking models)
- VE** -----no welding
- M** -----customized

STANDARD FEATURES

- **ALL WELDED CONSTRUCTION** - fully welded, ground and polished to form one integral unit; no screws, pop-rivets or solder.
- **ALL 18 GAUGE, TYPE 304, 18-8 STAINLESS STEEL**
- **REMOVABLE ON WELDED KEY-HOLE STUDS**
- **LOCKING MODELS** - include folding lockable cover, which conveniently stores under bottle rail.

Model Number Guide

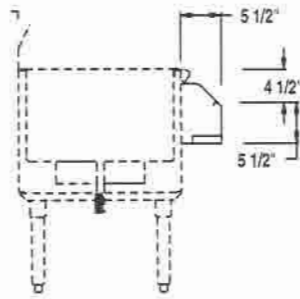
Use this guide to create the model specific to your needs.



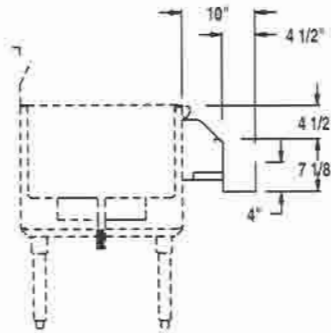


BR MODELS

Bottle Rails



BRS SECTION



BRD SECTION

REMOVABLE SINGLE			REMOVABLE DOUBLE		
length	model	bot.	length	model	bot.
in.	number	cap.	in.	number	cap.
12	BRS-12	3	12	BRD-12	6
18	BRS-18	5	18	BRD-18	10
24	BRS-24	6	24	BRD-24	12
30	BRS-30	8	30	BRD-30	16
36	BRS-36	10	36	BRD-36	20
42	BRS-42	12	42	BRD-42	24
48	BRS-48	13	48	BRD-48	26
54	BRS-54	15	54	BRD-54	30
60	BRS-60	17	60	BRD-60	34
66	BRS-66	18	66	BRD-66	36
72	BRS-72	20	72	BRD-72	40
INTEGRAL SINGLE LOCKING RAILS			INTEGRAL DOUBLE LOCKING RAIL		
12	BRSL-12	3	12	BRDL-12	6
18	BRSL-18	5	18	BRDL-18	10
24	BRSL-24	6	24	BRDL-24	12
30	BRSL-30	8	30	BRDL-30	16
36	BRSL-36	10	36	BRDL-36	20
42	BRSL-42	12	42	BRDL-42	24
48	BRSL-48	13	48	BRDL-48	26