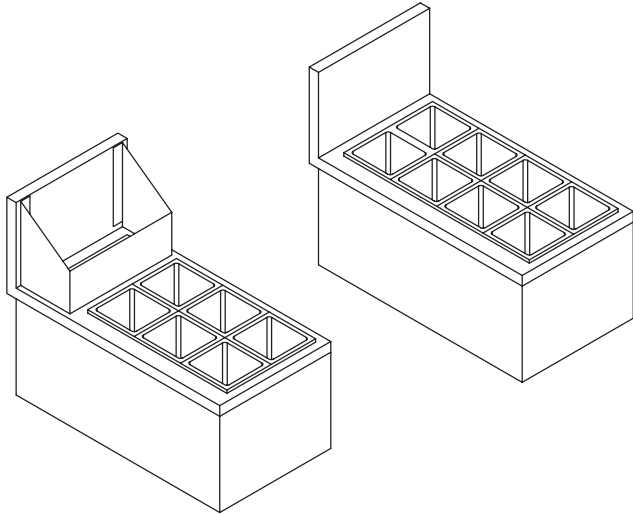


# VL SERIES



## BC MODELS

### Bottle Storage Chests



PROJECT \_\_\_\_\_  
 ITEM NO. \_\_\_\_\_  
 QTY. \_\_\_\_\_  
 MODEL NO. \_\_\_\_\_

#### "S" SERIES 19 1/2" DEEP

	LINE	MODEL	LENGTH	WELLS	CHASE
<input type="checkbox"/>	VL	SBC-3	6"	3	--
<input type="checkbox"/>	VL	SBC-6	12"	6	--

#### "D" SERIES 23" DEEP

	LINE	MODEL	LENGTH	WELLS	CHASE
<input type="checkbox"/>	VL	DBC-4	6"	4	--
<input type="checkbox"/>	VL	DBC-8	12"	8	--
<input type="checkbox"/>	VL	DBC-3C	6"	3	6x6"
<input type="checkbox"/>	VL	DBC-6	12"	6	6x12"

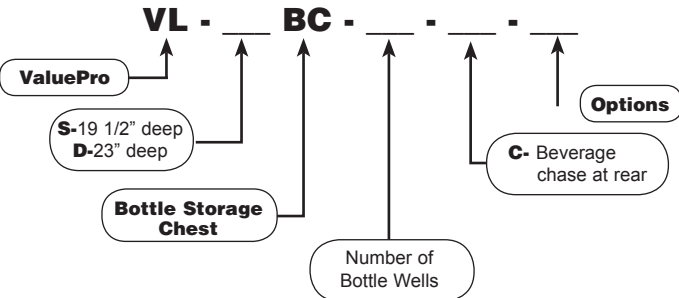
"C" at end of part # indicates models with beverage chase and chimney at rear

### STANDARD FEATURES

- **ALL WELDED CONSTRUCTION** - fully welded, ground and polished to form one integral unit; no screws, pop-rivets or solder.
- **TOP** - 18 gauge #304 series stainless steel.
- **FRONT APRON** - 20 ga. #304 series, stainless steel.
- **BACK** 20 ga. #304 series, stainless steel.
- **BOTTOM** 20 ga. #304 series, stainless steel.
- **ENDS** 20 ga. #304 series, stainless steel.
- **BACKSPLASH** - 20 ga. #304 series, stainless steel.
- **BOTTLE WELL ASSEMBLIES** - individual polypropylene bottle wells drop into chest

### Model Number Guide

Use this guide to create the model specific to your needs.



### OPTIONS

- CB----- cabinet base
- M----- customized



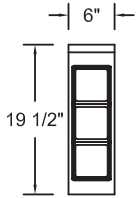
CONFORMS TO ANSI/NSF STANDARD 2

# VL SERIES

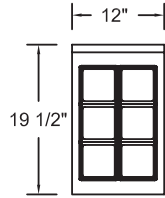


**BC MODELS**

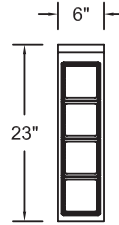
Bottle Storage Chests



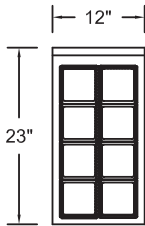
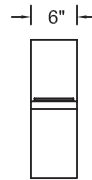
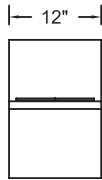
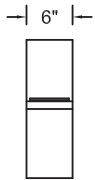
**SBC-3**



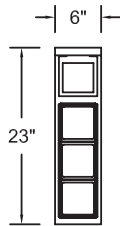
**SBC-6**



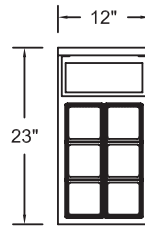
**DBC-4**



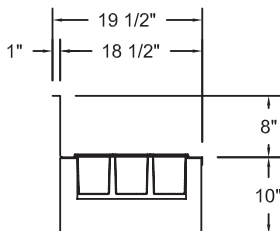
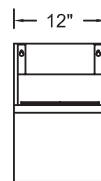
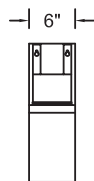
**DBC-8**



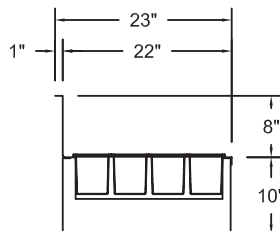
**DBC-3C**



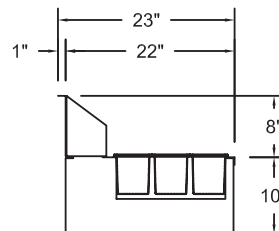
**DBC-6C**



**SBC-SECTION**



**DBC-SECTION**



**DBC-\_C-SECTION**