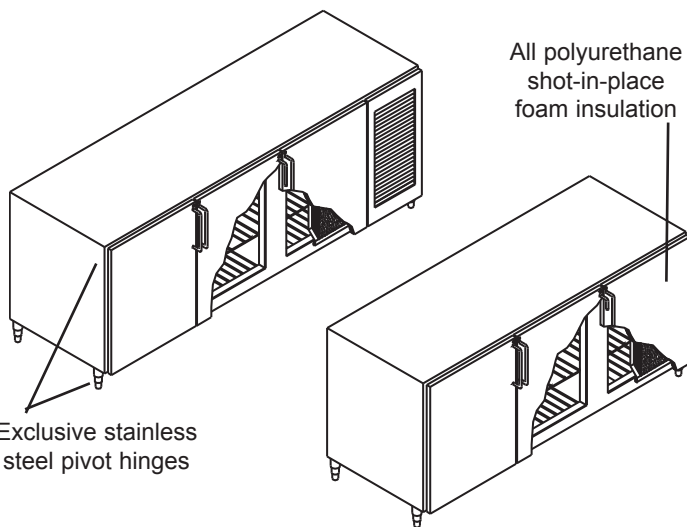


VL SERIES



BBL MODELS

32" High Backbar Refrigerators & Dry Cabinets



PROJECT _____
 ITEM NO. _____
 QTY. _____
 MODEL NO. _____

OMNI EXCLUSIVE

SANITATION APPROVED FOR OPEN FOOD CONTAINERS - 1/2" RADIUS INTERIOR CORNERS

LINE	DOOR	REMOTE		SELF-CONTAINED		DRY STORAGE		
		MODEL	LENGTH	MODEL	LENGTH	MODEL	LENGTH	
<input type="checkbox"/>	VL	1	BBLR-1	24"	BBLS-1	39"	DSL-1	24"
<input type="checkbox"/>	VL	2	BBLR-3	48"	BBLS-2	63"	DSL-2	48"
<input type="checkbox"/>	VL	3	BBLR-4	72"	BBLS-3	87"	DSL-3	72"
<input type="checkbox"/>	VL	4	BBR-4	96"	BBLS-4	111"	DSL-4	96"

STANDARD FEATURES

- ALL WELDED CONSTRUCTION
- TOP - 20 gauge galvanized sub-top.
- EXTERIOR FRONT & INTERIOR - 20 gauge stainless steel. Ends, back and bottom are 18 gauge galvanized.
- DOOR PAN - Molded plastic with magnetic gasket.
- DOOR HARDWARE - Exclusive heavy-duty 12 gauge stainless steel pivot hinges with attractive chrome door pull and locks.
- INSULATION - 2" thick polyurethane shot-in-place foam (NO CFC's)
- BREAKER STRIP - Exclusive Foam-Locked breaker strip permanently installed without mechanical fasteners.
- SHELVING - Each door section includes two adjustable, vinyl coated wire shelves.
- SELF-CONTAINED REFRIGERATION - R-404A fully balanced hermetic condensing unit is provided with evaporator coil, TX valve, thermostat, gravity defrost system and condensate evaporator.
- REMOTE MODELS - include all of the above with the exception of condensing unit and condensate evaporator pan. Expansion valve shipped loose, unless pre-piped option is added.

Please specify door style when ordering by adding door style code to end of model number
 example: **BBLS-4SD**

- FL- prepared for field laminated
- L- factory laminated
- SD- stainless steel
- GL- glass
- PC- powder coat enamel painted

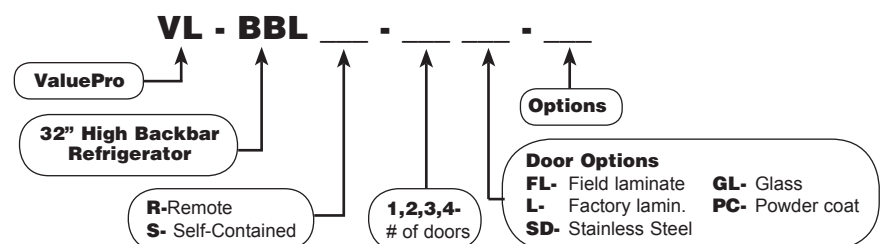
OPTIONS

- STP ----- finished 18 gauge s/s top
- 6LG ----- 6" x 1-5/8" stainless steel legs with adjustable bullet feet
- CST ----- casters
- TK ----- stainless steel toe kick plate
- SSS ----- stainless steel wire shelves
- AS ----- all stainless steel construction
- F ----- freezer
- RCND ----- remote condensing unit
- EVP ----- condensate evaporator (remote only)
- DT ----- dual temp
- M ----- customized
- PP ----- Pre-piped & pre-wired. Refrigeration,

plumbing and electrical will be stubbed out at required location by specifying one of the following: LE-left end, RE-right end, BL-back left, BR-back right.

Model Number Guide

Use this guide to create the model specific to your needs.

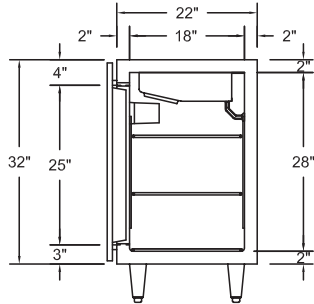


VL SERIES

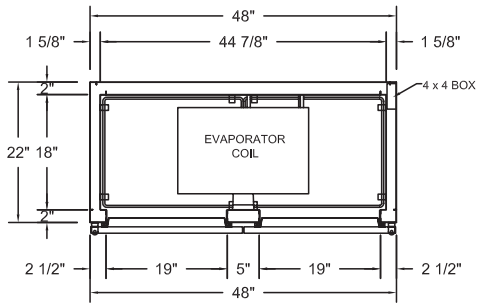


BBL MODELS

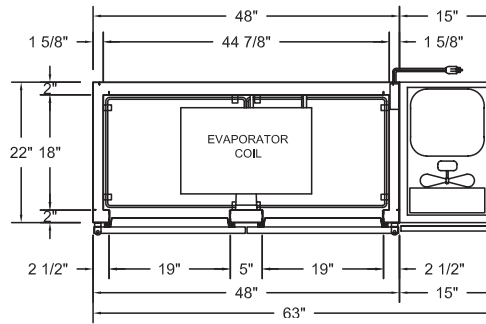
32" High Backbar Refrigerators & Dry Cabinets



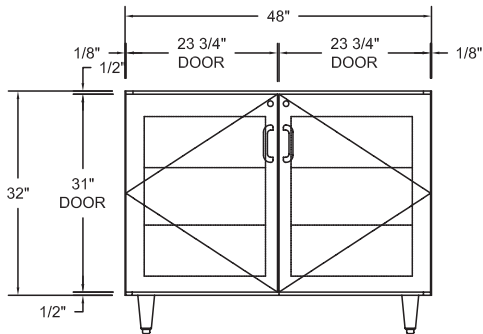
SECTION



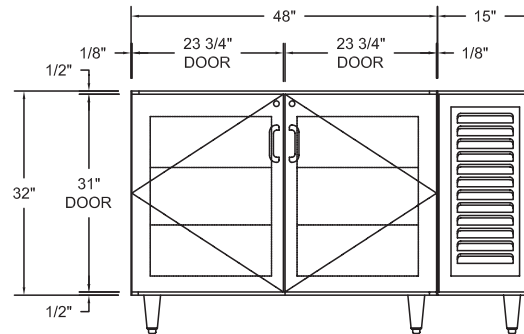
BBLR-2



BBLS-2



ELEVATION



ELEVATION

	MODEL	DOOR	O.A. CABINET DIMENSIONS			COMPRS.	ELECTRICAL			
		SECTIONS	LENGTH	DEPTH	HEIGHT	HP.	AMPS	VOLTAGE	PHASE	BTUs
REMOTE	BBLR-1	1	24"	24"	32"	—	1.8	115v	SINGLE	1000
	BBLR-2	2	48"	24"	32"	—	2.6	115v	SINGLE	1300
	BBLR-3	3	72"	24"	32"	—	2.6	115v	SINGLE	1700
	BBLR-4	4	96"	24"	32"	—	3.4	115v	SINGLE	2300
SELF-CON.	BBLS-1	1	39"	24"	32"	1/3	9.4	115v	SINGLE	—
	BBLS-2	2	63"	24"	32"	1/3	9.4	115v	SINGLE	—
	BBLS-3	3	87"	24"	32"	1/3	10.4	115v	SINGLE	—
	BBLS-4	4	111"	24"	32"	1/3	10.4	115v	SINGLE	—
DRY	DSL-1	1	24"	24"	32"	—	—	—	—	—
	DSL-2	2	48"	24"	32"	—	—	—	—	—